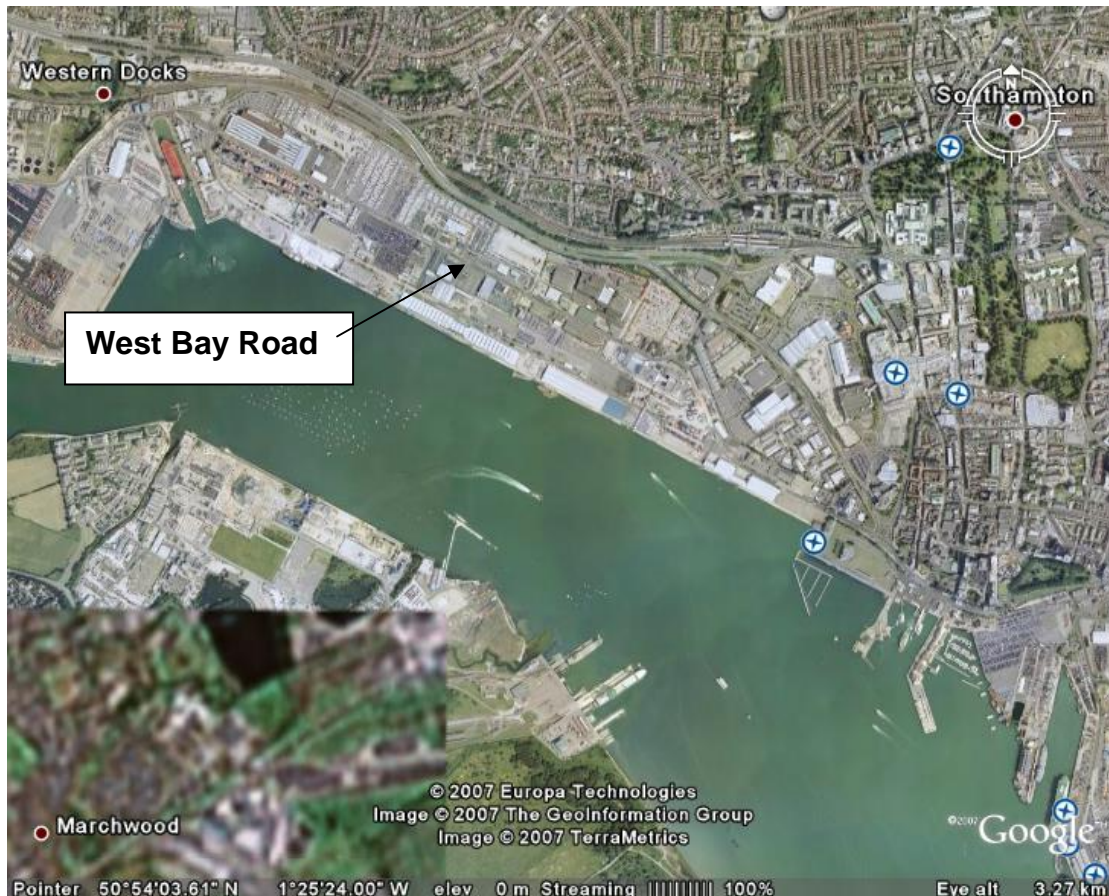




NewGrids Limited Case Study

West Bay Road, Southampton Docks, UK



The location of West Bay Road

West Bay Road is the main spine road through the largest port in the UK. During its reconstruction in 2004 Associated British Ports Civil Engineering Department was faced with a formation that in places had a CBR of only 0.5. The road carries 11000 commercial vehicles per day in each direction and is an essential part of the port infrastructure.

It was decided that a geogrid-reinforced solution was needed to ensure good performance of the re-built road. The design adopted was a 600mm deep capping layer containing two layers of E'GRID 4040 reinforcement with a light-weight polypropylene woven geotextile underneath as a separator.

The construction of this reinforced capping layer can be seen below.



After construction of this reinforced structure the engineers were able to measure CBR Vales in excess of 15% at the top of the capping layer which was easily capable of carrying the load of the construction traffic and providing a firm foundation for the new section of roadway.

This method of overcoming the difficult ground conditions proved highly cost effective and since the material was available immediately from Distributor's stock there was no delay in the construction programme.

NewGrids/19.06.07